



Flat 8 Ashton Court
Croydon Road, Caterham CR3 6PW

RAYNERS
TOWN & COUNTRY

Flat 8 Ashton Court

Croydon Road, Caterham CR3 6PW

- ✓ Spacious First floor Purpose-built Apartment
- ✓ One Double Bedroom
- ✓ Kitchen including AEG Integrated Appliances
- ✓ Lounge / Dining room with Juliette Balcony
- ✓ Bathroom with Shower-bath
- ✓ Ample Storage
- ✓ Allocated Parking Space
- ✓ Lift, Video Entryphone system & Gated Entrance
- ✓ Gas Central Heating
- ✓ Close to Town Centre & Train stations

Spacious first-floor one-bedroom apartment and situated within a half-mile from Caterham town centre with commuter train service to London.

This attractive block has the benefit of a video entry-phone system, gated access and allocated parking.

Internally all rooms lead off from an 'L' shaped hallway with storage cupboard. The separate fitted kitchen includes AEG appliances. The double bedroom has a fitted wardrobe and the lounge/dining room has full length doors to a Juliette balcony.

Tenure: Leasehold

139 years remaining

Ground Rent £150 pa

Service Charge: £1,600 pa

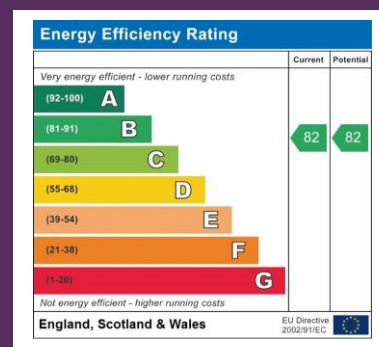
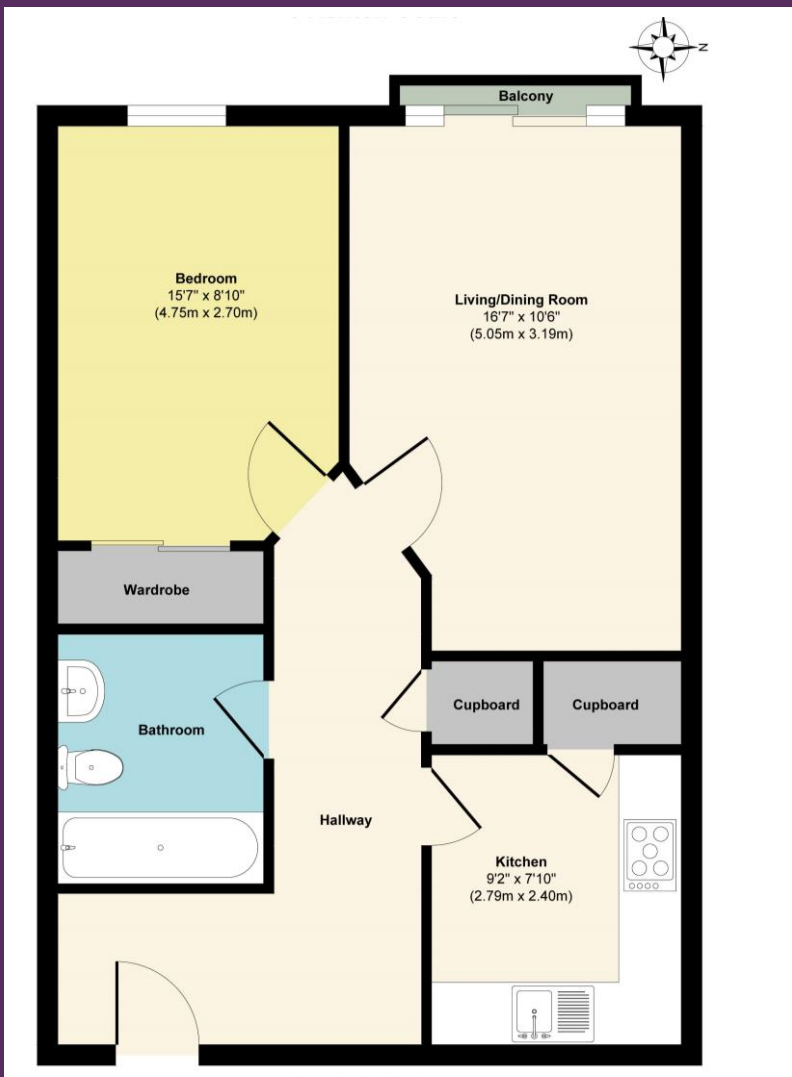
Local Authority:

Tandridge District Council

Mains Services: Gas, electricity & water
Mains Drainage.

Gross Internal Floor Area:

570sq ft / 52.95 sq m



2 GLEBE ROAD, WARLINGHAM, SURREY, CR6 9NJ

01883 622 258

warlingham@raynersproperties.com

www.raynersproperties.com

RAYNERS
TOWN & COUNTRY

IMPORTANT: we would like to inform prospective purchasers that these sales particulars have been prepared as a general guide only. A detailed survey has not been carried out, nor the services, appliances and fittings tested. Room sizes should not be relied upon for furnishing purposes and are approximate. If floor plans are included, they are for guidance only and illustration purposes only and may not be to scale. If there are any important matters likely to affect your decision to buy, please contact us before viewing the property. R772